



Strip of the Month (SOM) Program for 2019-2020

January Strip - Capital Letter I (or Belt Buckle)



This strip is made of two predominately-coloured fabrics and one accent fabric. Depending on your colour choice one might see the capital letter I, or one might see a belt buckle design. There are two different strip sets (1 and 2) that are sliced and rejoined, plus the spacer. The finished strip will measure about 42 inches wide by 5 plus inches deep. All seams 1/4 inch.

Fabric Requirements:

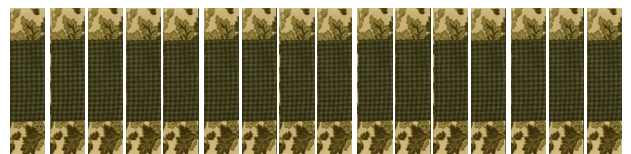
- Fabric A: 5 inches x WOF (width of fabric), or 10 inches if using a fat quarter
Fabric B: 6 inches x WOF, or 12 inches if using a fat quarter.
Fabric C: (accent fabric for filling strips) 1 ½ inches x 18 inches.

Cutting Fabric

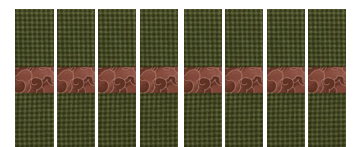
- Fabric A: Cut two pieces 1 ½ inches x at least 30 inches
Cut one 1 ¾ inches x WOF. You will need at least 54" of this cut. This strip will be a spacer.
- Fabric B: Cut one piece 3 ½ inches by at least 30 inches
Cut two pieces 2 ½ inches x at least 18 inches

Sewing and Slicing Instructions - Set 1 and Set 2

- Set 1** Using the three 30 inch wide strips, sew together in an A-B-A pattern and press. Slice this A-B-A strip into sixteen 1 ¾ inch segments.



- Set 2** Using the three strips that are cut 18 inches wide, sew together in a B-C-B pattern and press. Slice this B-C-B strip into eight 2 inch segments.



Spacer Strip

Measure the height of your A-B-C and/or your B-C-B segments and cut the long strip of fabric A into segments that length.

Complete and Assemble

See the picture. Assemble strips and sew in the following pattern and press.

Spacer - Set 1 - Set 2 - Set 1- Spacer - Set 1 - Set 2 - Set 1 - etc

From This To This

