

Adding Borders to your Quilt Straight and Mitered

Straight

1. Lay your quilt top onto a flat surface.

2. Cut border strips and join together.

3. Lay border strips (2 together so they are the same size) over the center of the quilt and cut to size.

4. Pin border strips to the quilt (pin center & both ends first, then add more pins evenly) on two sides and sew into place.
Iron.

5. Repeat these steps for the other two sides of the quilt .

6. Iron.



Step #3



Step #4



Step #6

Adding Borders to your Quilt Straight and Mitered

Mitered

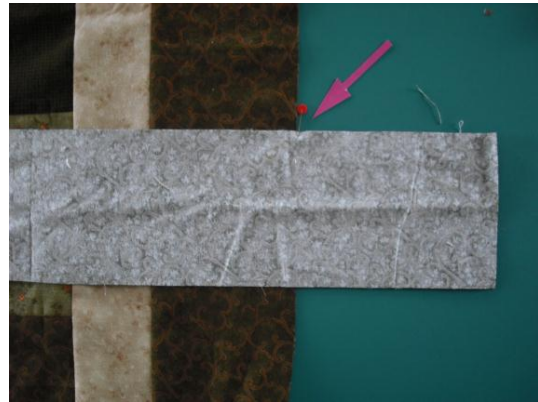
1 : Lay your quilt top out onto a flat surface.

2. Cut border strips and join together.

3. Lay border strips (together so they are both the same size) over the center of the quilt, mark the ends with a pin and cut them larger than the width of your quilt. (strips should be cut longer than the width of the quilt by more than width of the border.)

4. Pin and sew all four borders into place, stopping $\frac{1}{4}$ " from the ends and backstitch,

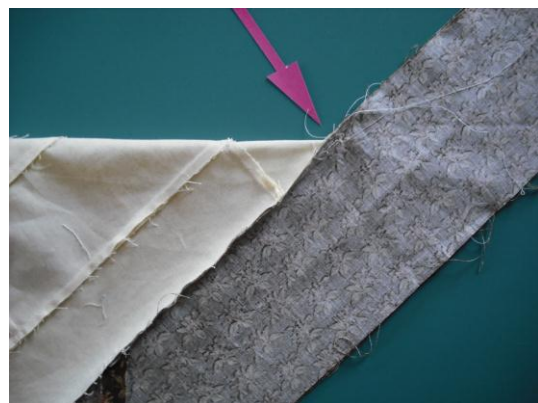
5. Fold quilt into a triangle at the 1st corner, laying borders on top of another -right sides together.



Step #3



Step # 4



Step # 5

Adding Borders to your Quilt Straight and Mitered

6. Check that the corner is folded properly at the inside corner.
7. Line your ruler up using the 45 degree angle. This should line up both on the fold as well as the outside edge. Mark with a pencil or marking pen.

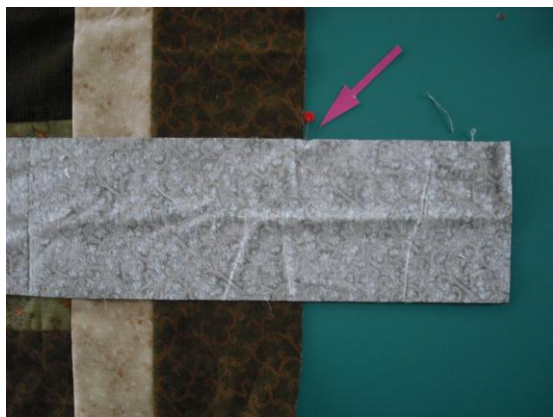


Steps #8&9

8. Pin border along the pencil line.
9. Baste along the line.
10. Press open on back.
11. Check to see that the corner is square.
12. Re-stitch using regular stitch length.
13. Trim off extra border fabric.



Step #10



Step #7



Step #11