

Back to Basics

Accurate Cutting with Your Rotary Cutter and Reading Rulers

PRESENTED BY MELISSA STEWART

NOV 2023



**Precision cutting is key to a well-made quilt.
Today we will discuss some steps to help.**

1. Location. Make sure you have lots of light.

Can you see clearly with no shadows?

**2. Mat. Keep mat clean by wiping any lint off
with a damp cloth.**



3. A rotary cutter, with a sharp blade is important! Replace regularly, being sure the new blade is correctly installed and doesn't wobble (loose).



4. Rulers. There are many types/brands. I prefer Omni grip, the measurements are accurate and clearly marked.

- **Grip tape helps to prevent movement while cutting.**



5. Its quite important to make sure you square up your fabric.

- **Iron**
- **Consider using starch.**
Easier to cut and sew.
- **Fold fabric so that the selvage edges are together.**



**6. Line your ruler
up on your fabric,
one side needs to
be against the fold
as to keep the center
square.**



7. With your rotary cutter, using even pressure cut along the top edge. You may need to adjust your hand to keep pressure on the ruler, don't move the ruler or fabric.



Rulers

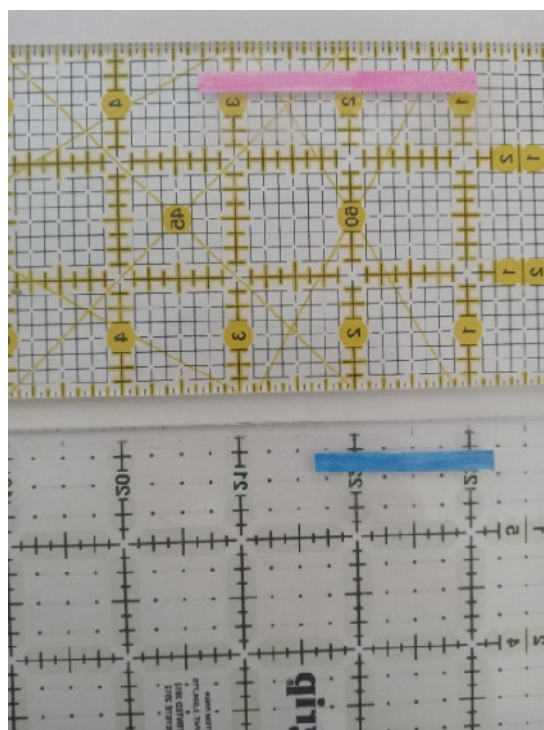
As mentioned previously there are many brands of rulers. I have noticed that not all rulers and mats have accurate measurements. It's very important to use the same rulers throughout a project, or at least stick with the same brand.



Don't use your mat for a ruler, it may not be the same as your ruler and will become worn over time.



Using a bit of 1/4" painters tape helps me remember what line I'm cutting with.



Most rulers are marked in inches, then broken up into 1/4" and 1/8" measurements.

Use the right ruler for the job. For example, if you are using a small ruler to square up a large block it's much harder to keep accuracy.

